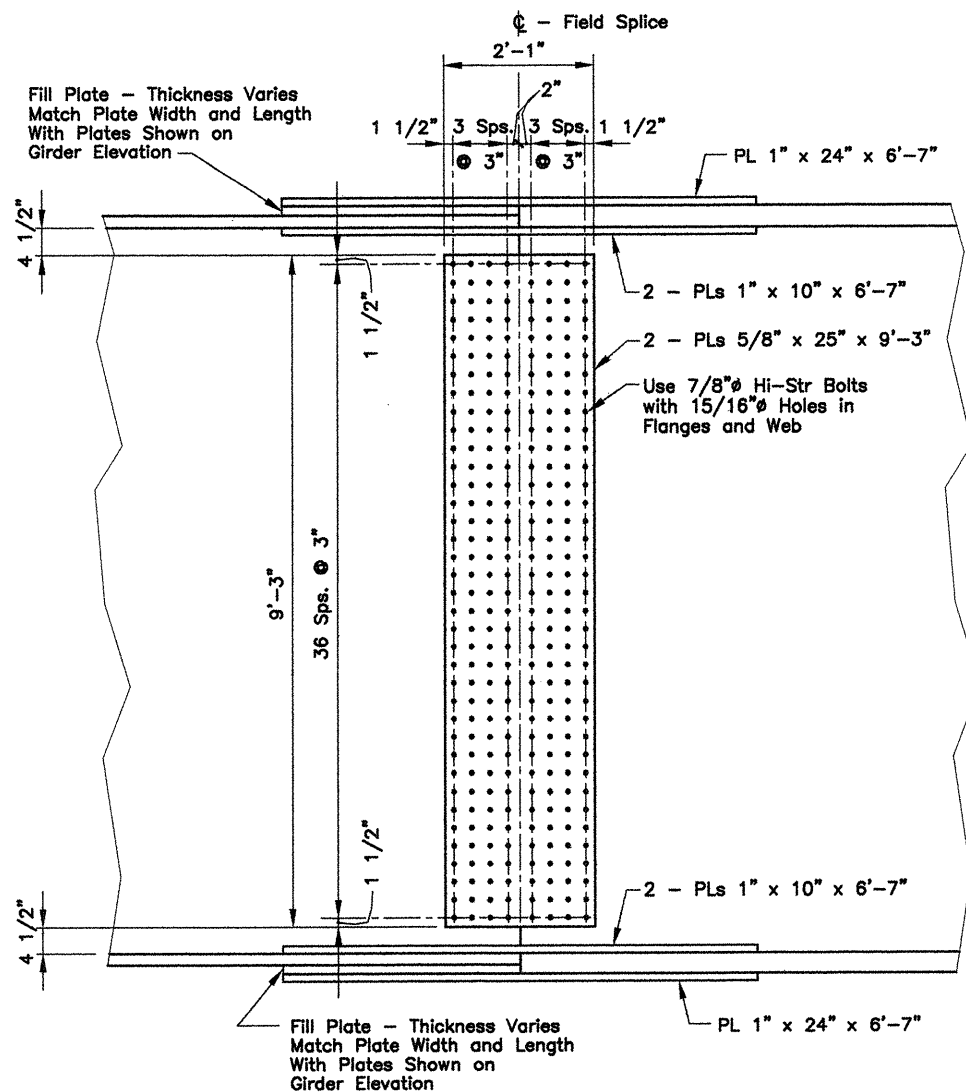


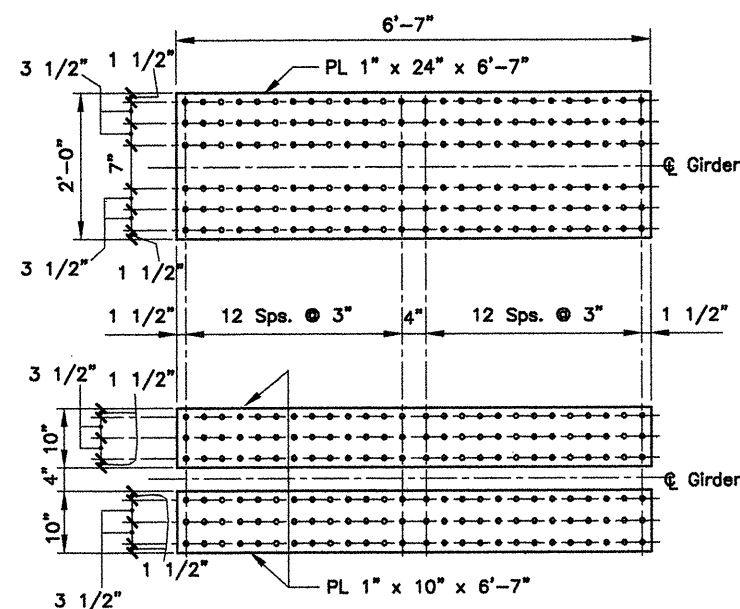
ACAD SCALE: 1/16"=1'-0"

COMPANY\1999 JOBS\99-044 AHTD\WHITERIVER\JOB 110394\1050sp1att1&2



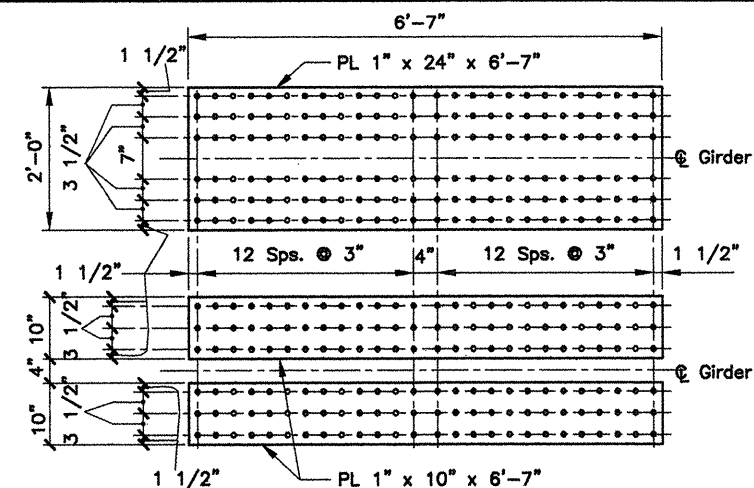
DETAILS OF FIELD SPLICE TYPE FS1

3/4"=1'-0"



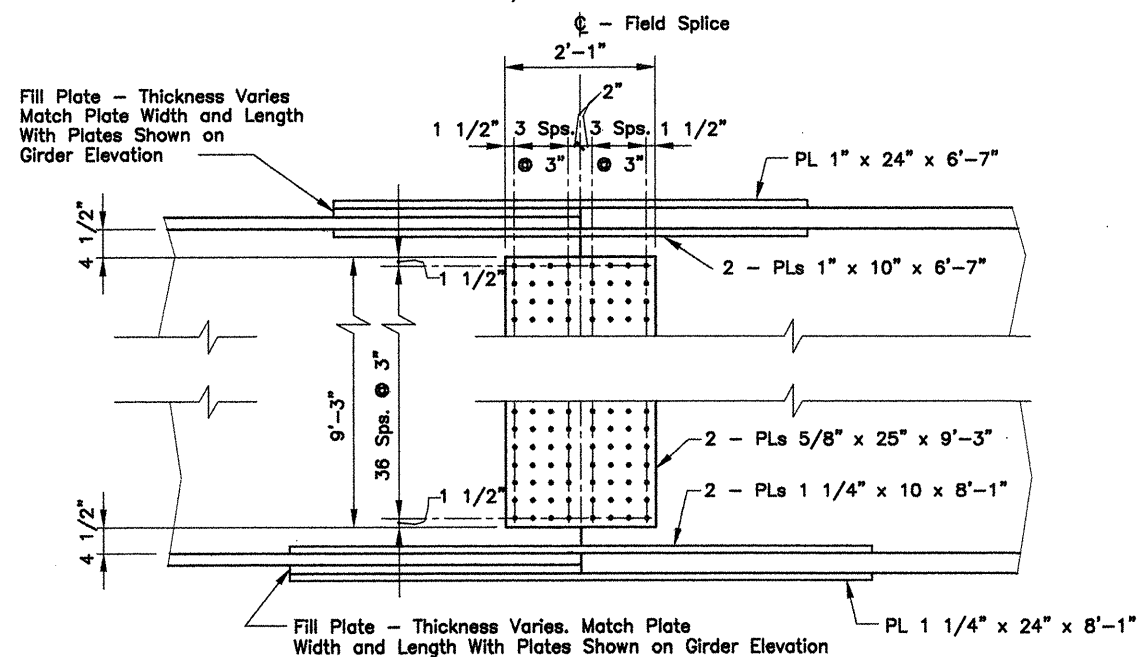
TYPE FS1 TOP AND BOTTOM FLANGE PLATES

3/4"=1'-0"



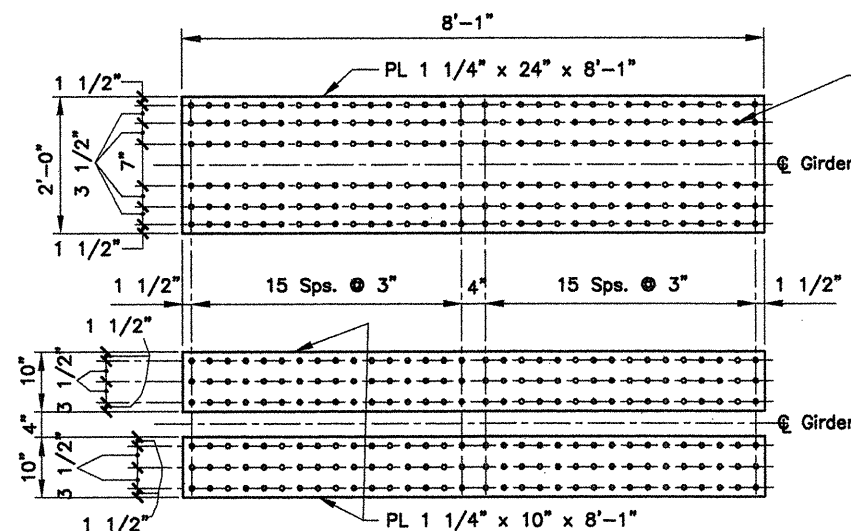
TYPE FS2 TOP FLANGE PLATES

3/4"=1'-0"



DETAILS OF FIELD SPLICE TYPE FS2

3/4"=1'-0"



TYPE FS2 BOTTOM FLANGE PLATES

3/4"=1'-0"

Use 7/8" Hi-Str Bolts with 15/16" Holes in Flanges and Web

ALTERNATES NO. 1 & NO. 2  
BRIDGE OVER WHITE RIVER  
(SHEET 4 OF 15)

DETAILS OF 1050'-0" CONT. COMP  
PLATE GIRDER UNIT

WHITE RIVER STR. & APPRS.  
(CLARENDON) (PH. II) (F)  
MONROE COUNTY

ROUTE 79 SEC. 13

ARKANSAS STATE HIGHWAY COMMISSION

LITTLE ROCK, ARK.

Engstrom/Modjeski and Masters

DRAWN BY: DLG DATE: Nov. 07 FILENAME: b110394\_s04  
CHECKED BY: CDE DATE: Nov. 01 SCALE: 3/4"=1'-0"  
DESIGNED BY: JHG DATE: Nov. 01  
BRIDGE NO. 06830 DRAWING NO. 41982

